

NETWORKS LAB (EE 351)

EXPERIMENT No. 8

Frequency response of Twin-T Notch Filter

OBJECTIVE: To find out the Frequency response of Twin-T Notch Filter.

EQUIPMENT: Resistor, capacitor, Breadboard, CRO, signal generator.

CIRCUIT DIAGRAM:

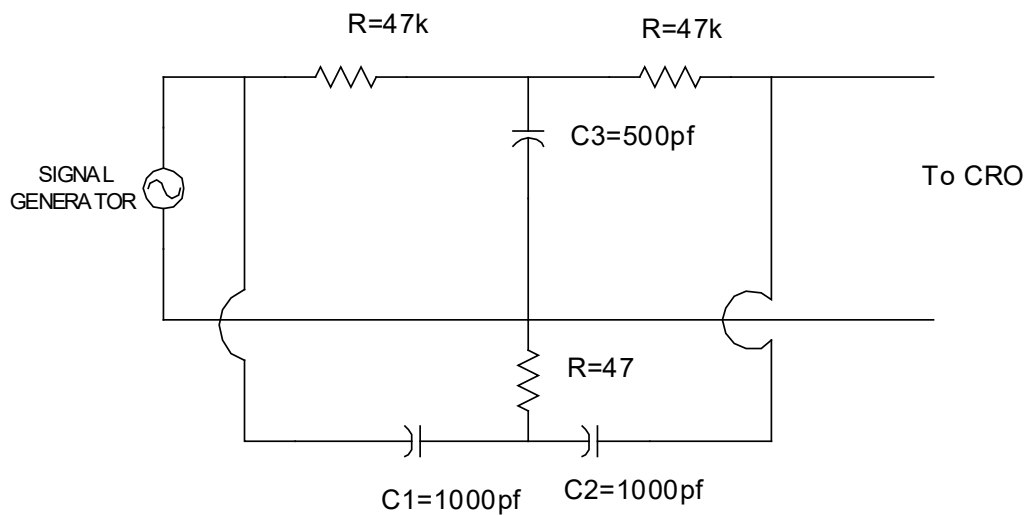


Fig.A

PROCEDURE:

1. Connect the circuit as shown in figure. A.
2. By varying the frequency, take the reading of output voltage and input voltage.
3. Get the current in circuit by dividing resistor voltage with resistance.
4. Plot the graph, gain (output voltage/ input voltage) versus input frequency.

MODEL GRAPH:

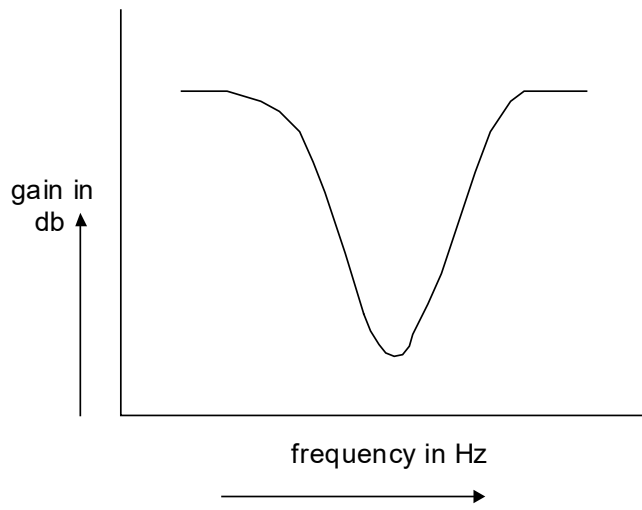


Fig.B

TABULATED FORM:

Frequency	Input voltage V_i	Output voltage V_o	Gain(V_o/V_i)

RESULT: